



We are **Maxima Lifts**  
Proud to BE  
**MADE IN INDIA**

#### About us

Maxima Lifts is one of the leading and accomplished companies in the production and manufacturing of Lifts in the market today. But what sets the company apart from others is the quality and high precision products and the prompt after-sales service to customers without any delay. Established in 2012, Hindu Lifts is being managed and supervised by Mr. K. Sudhir who is in this industry for the past many years. The duo has come up with the latest technical procedures and practices. The company has an assortment of solutions to offer to the customers.

It gives the customers the best of all services along with a cost-effective, economical and affordable price range. Maxima Lifts employees and experts are always engaged in continual innovation and quality improvement in all processes and products. The company boasts of their 24 x 7 service available with a team of experts, technicals and professionals to cater to the customer demands.

- Passionate about our contribution to our customers and related constituencies' success. Strive to meet budget and deadlines regardless of adversities.
- Embrace creativity and take on changes positively
- Create a vibrant workplace with active participation



# PRODUCT CATEGORY



## Capsule / Panoramic Elevator

Capsule / Panoramic elevators are backed by advanced Control Technology applying fully digital vector variable frequency drive technology and a flowing scenery in the urban city. Basically, installed in the shopping malls, complex apartments. etc...



## Auto Door Elevator

Auto Door Elevator is durable by design and accurate by technology. To provide best vertical transportation solutions. with trouble free performance and low maintenance cost. This is most reliable and designed to suit every construction requirement.



## MRL Highspeed Gearless Elevator

Gearless Highspeed Elevators are traction elevator that features a compact motor drive mounted inside the liftshaft. Our Conventional Highspeed Elevators are available in range of speeds from 1.0 m/sec to 2.5 m/sec. with dual disk brakes. MRL lifts allow fast powerful energy efficient transportation.



## Manual Door Elevator

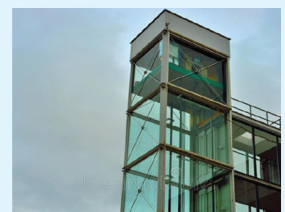
Manual Door Elevator is durable by design and accurate by technology. Several types of manual door elevators manufactured as per customer needs. Have excellent record of customer satisfaction.



## Goods / Passenger Elevators

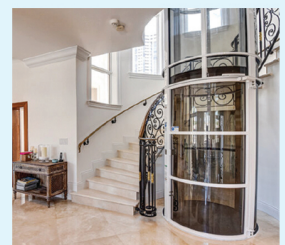
(Digital and Wood Finished)

Goods / Passenger Elevators are essentially designed to fulfill material handling requirements of various industries. Buildings, Hotels, etc... where floor leveling accuracy is of paramount importance and it would be a sane idea to install V3F drive in these elevators.



## Structure Elevators

Elevators are vertical transports that move people or materials between the floors or levels of a structure. All elevators include a cab or platform that move along rails located within a shaft or powered by one or two motors.



## Pitless Elevators

Pitless Lift is an innovative lift solution designed for use in existing buildings which have limited pit (min. 300 mm) and headroom (min. 3900mm) space available covering capacities from 4-8 passengers. Its adaptability to the space allocated allows it to take maximum advantage of existing stairwells which can be small and restrictive. Rated speed is available in 0.5m/s to 1m/s with Side or Center Opening Doors in Single entry (0 degree). Thru Car (180 degree) or Adjacent (90 degree) entrance arrangements.



## Hydraulic Elevator

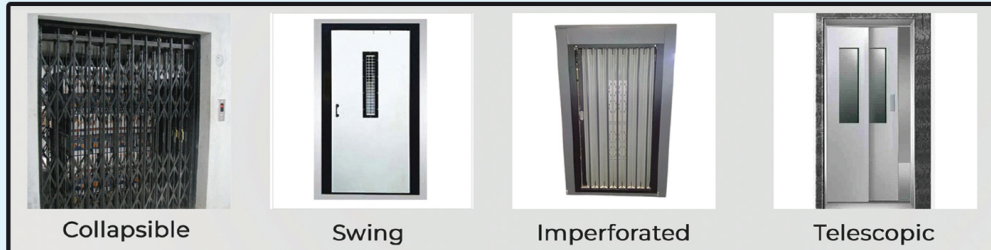
Looking for a low-maintenance elevator? Hydraulic Lifts provide the advantages of being relatively inexpensive. safe and easy to maintain. They have been rated as the safest option for Home Elevators. They have machine room located at the basement.

## Doors

We manufacture Elevators with Manual and automatic doors. Various types of manual doors and automatic doors are available to suit the site conditions and also to suit the needs of various customers.

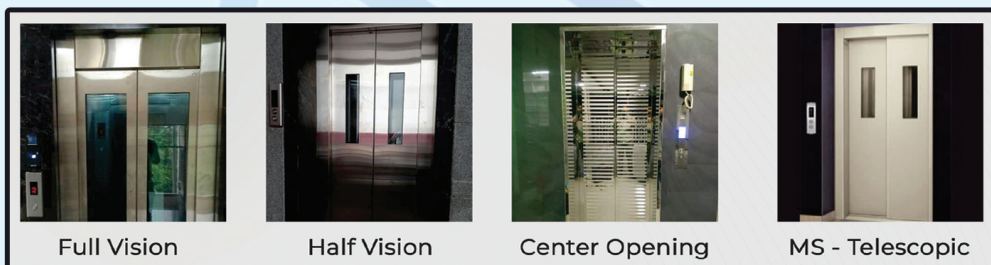
### Range of manual Doors

People continue to erect monumental sky croppers and make small buildings handicap accessible. Elevators will become an even more pervasive element in the society. Manual Doors includes Collapsible, Swing, Imperforated and Telescopic Doors..



### Range of Auto Doors

The Automatic Doors at grocery stores and office buildings mainly exist for convenience. On the other hand, they are absolutely essential and keep people from falling down an open shaft. We offer Full-Version, Half-Vision, Center Opening Doors as well as MS-Telescopic Doors where there is a space constraint.



Types of Doors - Manual Door, Power Operated Door (Auto-Door)

### Range of Cabins

We manufacture Elevators with various types of cabins to suite the Taste of every clints. We have a range which starts from basic Mild Steel Powder coated cabins to premium designer stainless steel cabins.

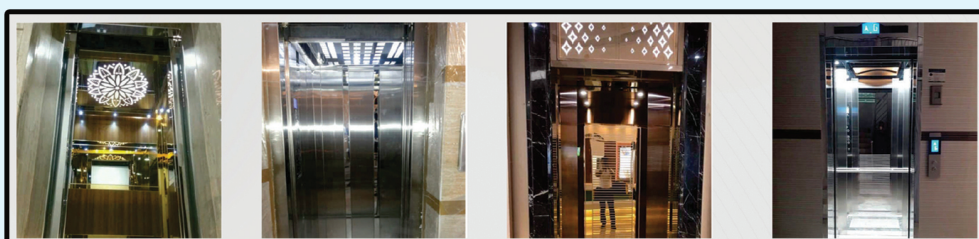
#### Mild Steel Powder coated cabins

The powder coating process is done very carefully seeing to it that each of the panels is perfectly done. This prevent the Mild Steel material from rust.



### Stainless steel Cabins

Stainless Steel Hairline Finish Cabin give a good feel to the cabin, these cabins do not need painting for lifetime. We use Grade 304 Stainless steel so as to avoid any rust from taking place and lasts throughout life time. The center panel on the rear side of the cabin is made form the stainless steel mirror finish sheets. This adds to the overall feel and is also a better option as compared to using glass mirrors as there will be no break-age or need for replacement

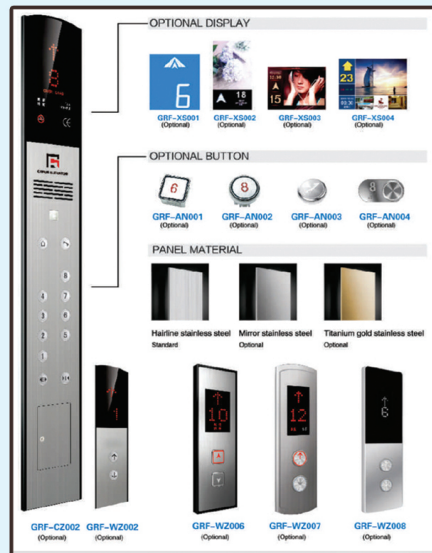




## Observation Elevator Car



## Main Machine - Interface



## Dumb Waiter Elevator



Window type (Up and Down directly separated)



Ground type (Up and Down directly separated)

## Frieght Elevator

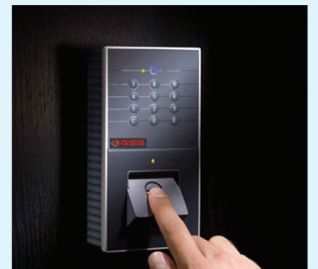


## Hospital Elevator



### BIOMETRIC SYSTEMS CAN ENHANCE SECURITY, CONVENIENCE, AND ACCESSIBILITY.

1. Improved security : Biometric authentication ensures that only authorized individuals can access specific floors or areas.
2. No need to carry keys, cards, or remember passwords.



### RFID (RADIO FREQUENCY IDENTIFICATION) CARDS

which can be integrated into various systems.

1. RFID cards can be used to grant or deny access to secure elevators.
2. RFID cards can be encrypted and secured to prevent unauthorized access.



### Head Office :

# 8-114/1, Sri Nagar Colony  
Near Mahila University, Tirupati - 517 502.

### FACTORY :

No. 250, Aparna Palem  
Kompalli, Hyderabad.

**Phone : 9703330965**

### BRANCHES

# 2-18-18, Plot No.29  
Madhava Nagar  
KAKINADA - 533 003.

# 309, Prudhvi Enclave  
Hill View Colony, IRR  
VIJAYAWADA - 520 015.  
Cell : 8499009696

# Plot No.44, Aparna Palem  
Kompalli  
HYDERABAD - 500 014.